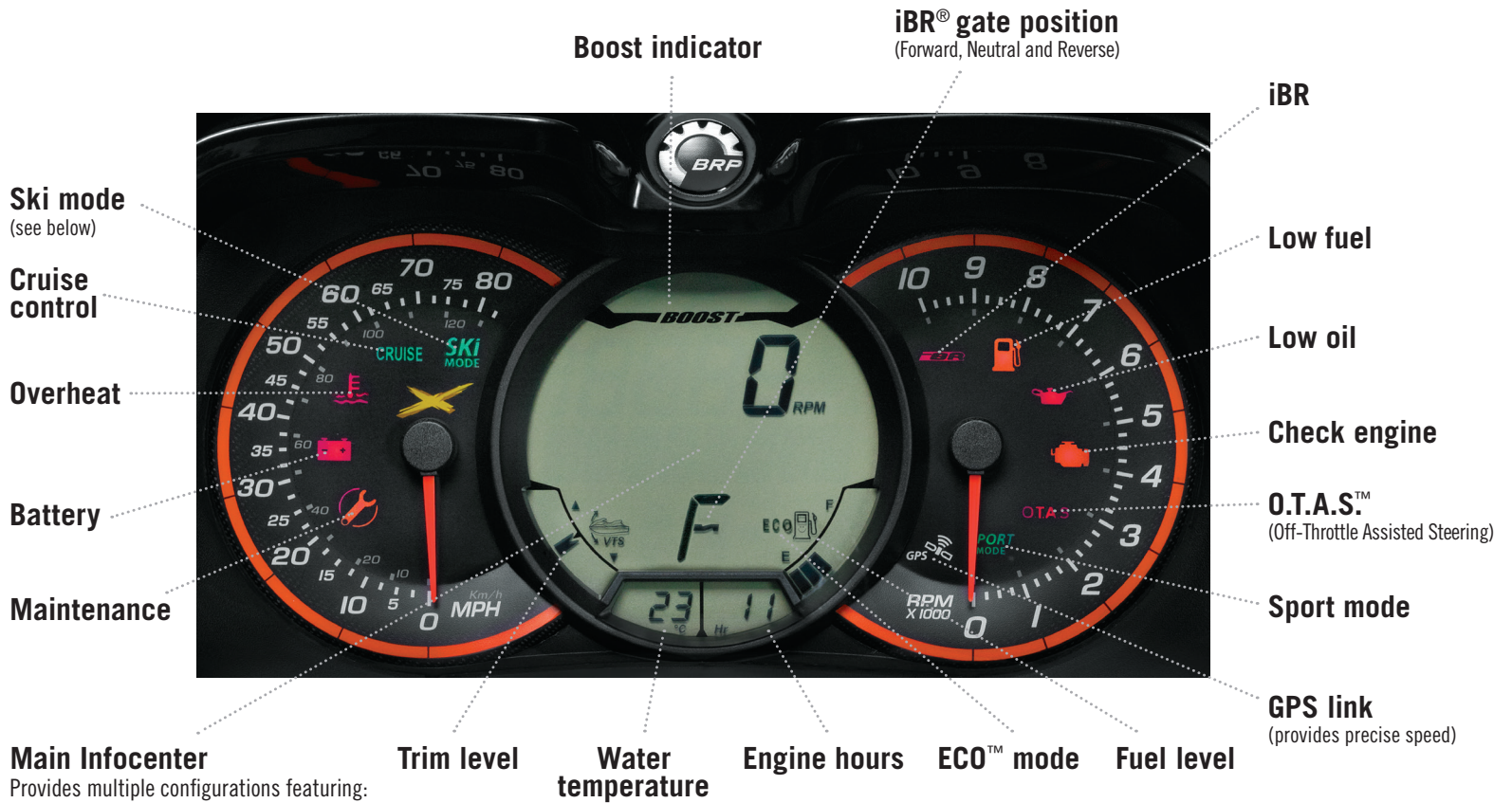


# 2017 TECHNOLOGIES & FEATURES\*

## GAUGE SIGNALS & INDICATORS

A sharply-styled gauge cluster is totally digital and communicates new features status to the driver at a glance. Many data points are user-customizable.



- Depth finder** .....Get instant and accurate depth
- Fuel consumption** .....Select between instant fuel consumption or your average on the fly
- Fuel autonomy** .....Select between the distance to or time before empty
- Altitude indicator** .....Get altitude wherever you are
- Top speed / RPM** .....Gives the top speed or RPM reached
- Average speed / RPM**.....Gives your average speed & RPM
- Clock** .....Know how much time you have left for fun on the water
- Engine temperature** .....Helps to prevent overheating of the engine
- Lap timer**.....Save lap times and get stats after a few laps
- Ski mode** .....An advanced iControl® feature that allows the driver to adjust the intensity of the launch for different rider skill levels and tow sports, while maintaining a constant speed. You get highly repeatable runs for the best possible tow sports experience.

- Touring mode / Sport mode**....Offers a choice between two throttle responses for different riding styles.  
**Touring mode** is the default setting offering a more progressive acceleration curve for a more confident ride – ideal for cruising and 2-up riding.  
**Sport mode** can be easily activated by pressing the Sport button for three seconds. It provides all acceleration performance for a more aggressive throttle response.
- ECO mode**.....The iTC™ function that automatically determines the most economical power delivery and sets the optimal speed for greatest fuel economy.
- Boost indicator**.....Shows the boost pressure in real-time from minimum (idle) to max boost pressure (open throttle) at all times so the rider knows the engine load condition.

FOR MORE FEATURE DESCRIPTIONS AND HOW TO ACTIVATE THEM, SEE OPERATOR'S MANUAL.

\*NOT ALL TECHNOLOGIES AND FEATURES ARE AVAILABLE ON ALL MODELS.

